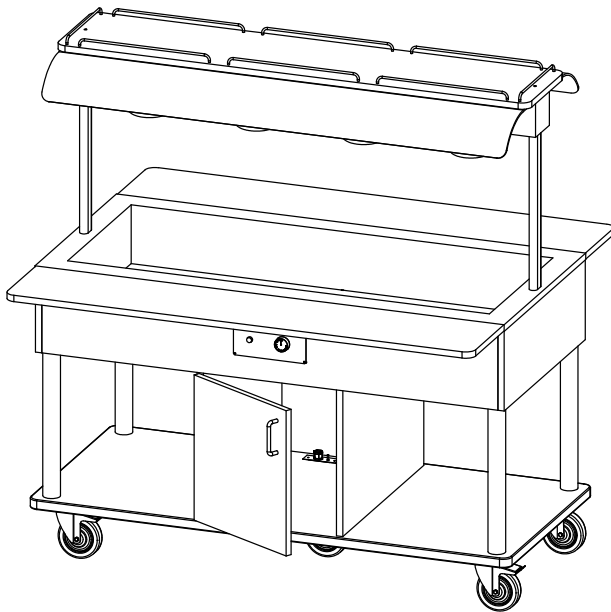




Rocam Losi srl
Via Industria 33/35
IT-20080 Albairate (Mi) - Italy
Tel: +39.02.9496.8356 - Fax: +39.02.9496.8341
www.rocam.it

Reg.Imprese 07013680967 Milano
C.F. e P.IVA/VAT number IT07013680967
R.E.A: MI-1929402 Cap.Soc. EUR10.000,00i.v.



Item:
HAPPY 3 B/INFRA
HAPPY 4 B/INFRA
HAPPY 5 B/INFRA

EN

Summary

1. Instruction Warnings	2
2. Safety and Right Use Warnings	2
3. Warranty	2
4. Settings	2
4.1 Appliance Start Up	3
4.2 Technical Features	4
4.3 Use Suggestions	4
4.4 Spare parts	5
4.5 Optionals	7
4.5.1 Optional 9	8
5. Cleaning and Maintenance	9
5.1 Breakdowns	9
5.2 Wiring Diagram	10
6. Disposal	11

1. Instruction Warnings

User has to hold the whole instructions. User must store up this document in case of use. Producer do not assume any responsibility for damages incurred due to the failure of improper use of this manual.

All measures in this manual are in mm.

2. Safety and Right Use Warnings



This product meets the latest technological evolutions and current safety guidelines. Trolley line **HAPPY**, object of this booklet, is projected to be in compliance with directives and field laws, in order to guarantee a safe and reliable product. Any other use will be considered inapposite to the original destination. Producer do not assume any responsibility for damages caused by an improper use. Responsibility lies only on user. A proper use also includes compliance with the instructions for use and installation and any additional documentation as well as the conditions of inspection and maintenance.

3. Warranty

We thank you for purchasing this product, designed and produced for a professional environment. Due to commercial and construction requirements, the manufacturer reserves the right to make changes in order to enhance the quality and use of product. The manufacturer, in compliance with European Community legislation, grants its products for 12 months. This guarantee does not include electrical parts, labour and all replacements related to an improper use of the good. Any manipulation carried out automatically excludes the liability of the manufacturer. The products or parts to be replaced or repaired for unequivocal defects in workmanship and materials used must be in a “free port” at the offices of the producer, who after a careful inspection, will repair or replace them. The repairs are carried out exclusively at the headquarters of the manufacturer, and none cost incurred by the customer for repairs will be refunded by the manufacturer unless expressly agreed.

4. Settings



This item is packed and shipped assembled. The manufacturer declines every responsibility of damage of someone or something caused by the failure to comply with the instructions of this manual. Do not make any structural change to the trolley. The elements composing the trolley (plastic, polyurethane foam, bubble wrap, Styrofoam, cardboard and so on) must be kept away from children as potential sources of danger and must be collected and disposed off separately in accordance with local regulations. The manufacturer declines every responsibility of damage of someone or something caused by the failure to comply with the instructions of this manual. After the unpacking of the item from its packing, proceed by removing the adhesive plastic tape before starting up the product. Any residual glue has to be removed carefully (do not use abrasive cleaners). The device is designed to run on AC to the voltage specified on the technical data plate (located on the bottom of the tank). The grounding line is marked by the colours yellow/green and must not be interrupted. The device is provided with a cable in accordance with the CE regulations and

with a CE and schuko plug (that can be replaced, when necessary, with a different plug, suitable for the specified wattage and in accordance to the current regulations and guidelines; when necessary, replace the provided cable with a new one with the same features).

Before switching the appliance

- Check if the electrical system can withstand the appliance's load (WATT as indicated on the technical plate)
- Make sure that the electrical system is provided with ground connection according to the current norms and guidelines.
- Connect the appliance with the ground network through a cable connected to the specific screw placed on the external casing of the appliance (See Component n°17 page. 5).

4.1 Appliance Start Up

Once ready to switch on the appliance, plug the device in the electrical system and turn the thermostat knob to the desired temperature. If the switch light is turned on, the device is working correctly and is reaching the selected temperature.

Once started up, the appliance reaches the selected temperature in about one hour (it depends much on the starting temperature, the room temperature and the exposure of the buffet trolley).the switch will turn off once the device has reached the selected temperature. The appliance will keep the temperature during the service time.

The infrared lamps have an independent system and are managed from the switch located beside the thermostat plastic knob.



This buffet trolley has been designed and created to work exclusively through the “bain-marie” system, therefore It shall never be turned on when without water in the tank.

4.2 Technical Features

HAPPY B/INFRA	3/1	4/1	5/1
Power supply	230 V	230 V	230 V
Temperature Range	+30°/+90°C	+30°/+90°C	+30°/+90°C
Range operating temperature	+30°/+90°C	+30°/+90°C	+30°/+90°C
Infrared lamps	3x250W	4x250W	5X250W
Tank capacity	3 x GN 1/1	4 x GN 1/1	5 x GN 1/1
Tank height (mm))	180	180	180
Weight (Kg)	120	170	200

4.3 Use Suggestions

Gastronorm tanks (with food) in all the possible splits combinations can be placed inside the general tank.

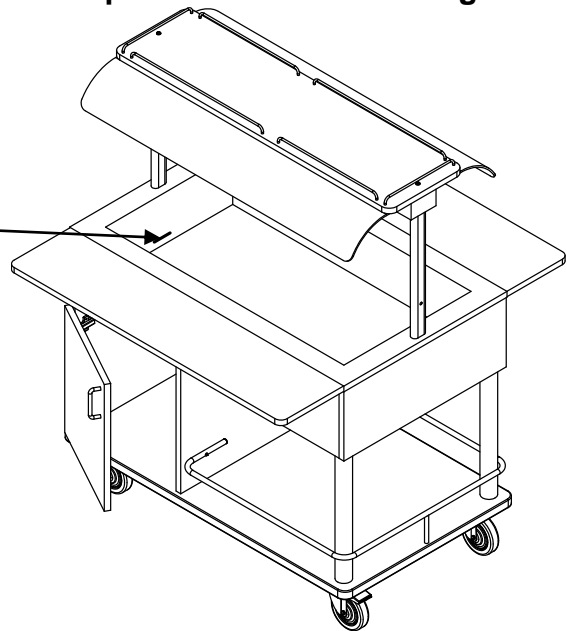
If the trolley has a laminated wood structure, pay close attention to the contact between the water in large quantity and the wooden parts to avoid blisterings and scrapings of the same.

The final customer must regularly check the food temperature and, if necessary, has to change the keeping temperature according to the requirements.

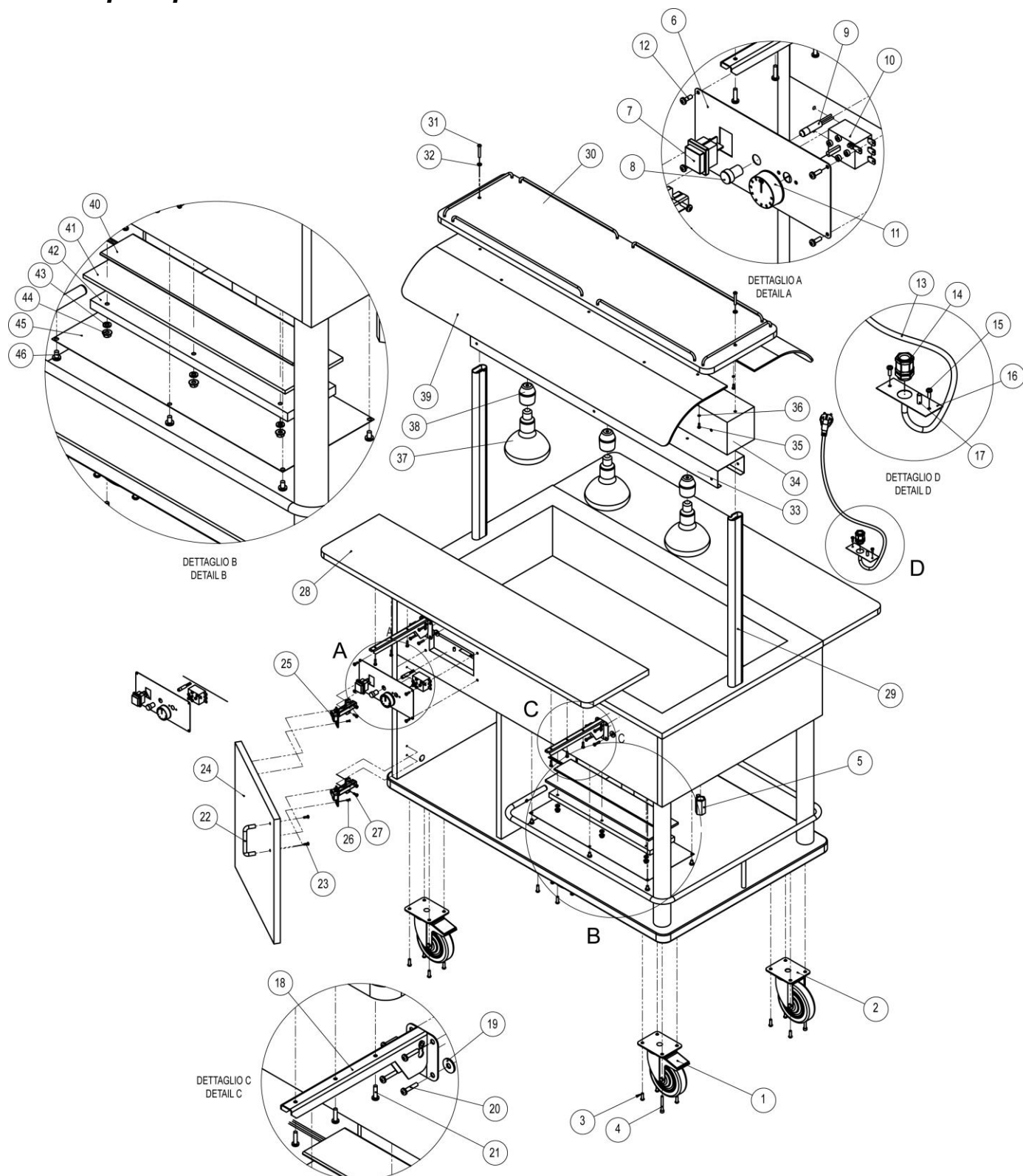
“MAX” water level mark



Before switching on, fill the tank with a moderate amount of water and, in any case, do NEVER exceed with water in the tank (see max water level marked on the tank side).



4.4 Spare parts

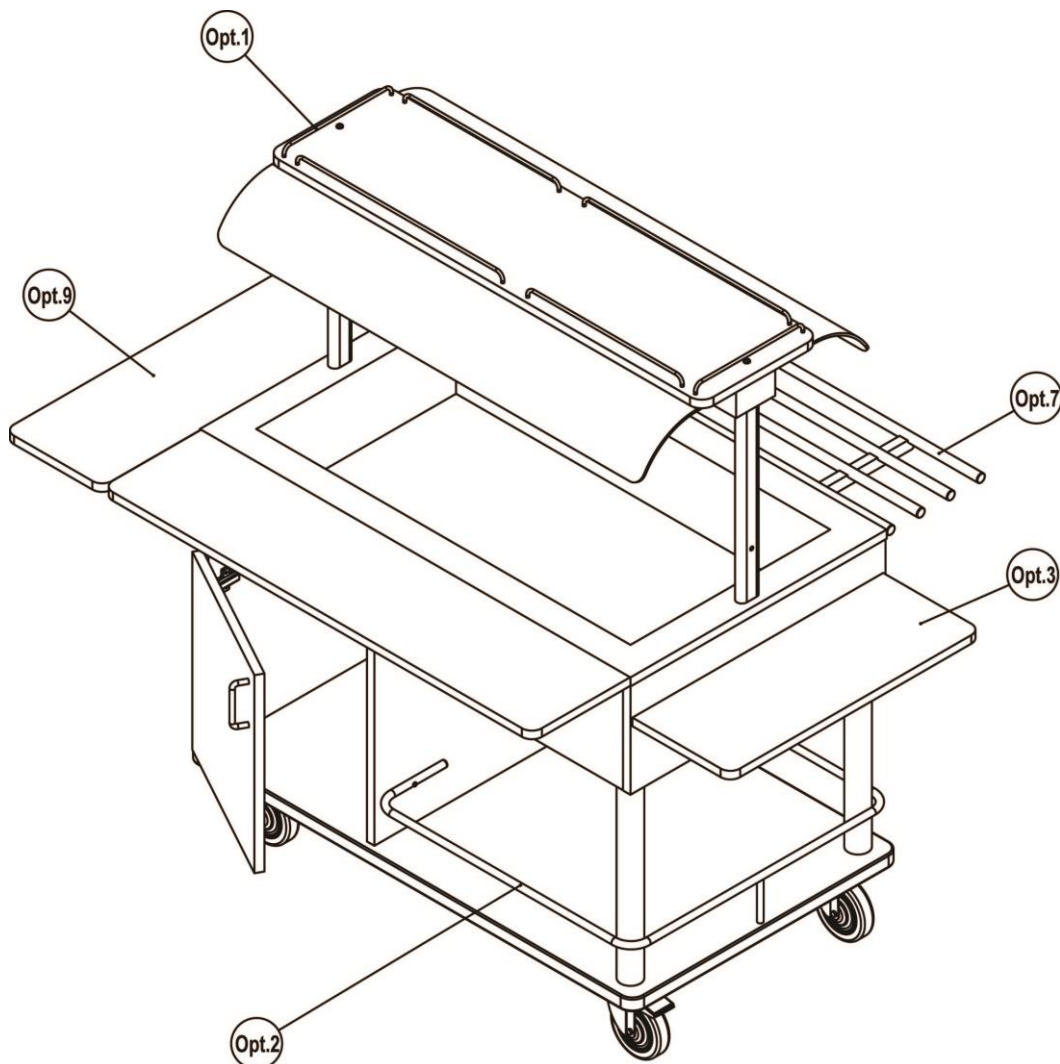


Ref	Code	Quantity			Description
		Happy 3 B/INFRA	Happy 4 B/INFRA	Happy 5 B/INFRA	
1	RF	2	2	2	Castor Ø125 with brake
2	RS	3	3	3	Standard Castor Ø125
3		16	16	16	Screws 6x20 black burnished
4		4	4	4	Screws 6x50 black burnished
5		1	1	1	Drain Cock 1/2"
6		1	1	1	Control Panel
7		1	1	1	Lamps Switch
8		1	1	1	Control light lid
9		1	1	1	Control light
10		1	1	1	Thermostat 30°/90°C
11		1	1	1	Thermostat knob
12		4	4	4	Control panel screws
13		1	1	1	Schuko cable
14		1	1	1	Cablegland
15		2	2	2	Screws 3,5x12
16		1	1	1	Cablegland plate
17		1	1	1	Grounding coupler
18		4	6	6	Dish holder bracket
19		8	12	12	Washer M6
20		16	24	24	Screws 3,5x20
21		12	18	18	Screws 3,5x16
22		1	1	1	Door handle
23		2	2	2	Screws 3,5x12
24		1	1	1	Door
25		2	2	2	Door hinges
26		2	2	2	Screws
27		2	2	2	Screws 3,5x16
28		2*	2*	2*	Long side dish holder
29		2	2	2	Chromed oval top support tube
30		1*	1*	1*	Top Happy
31		2	2	2	Screws 6x40
32		2	2	2	Washer M6
33		1*	1*	1*	St. steel lamp support
34		1*	1*	1*	St. steel top

35		10	14	14	Nut M4
36		10	14	14	Washer indented M4
37		3	4	5	Infrared lamps
38		3	4	5	Ceramic lamps holders
39		2*	2*	2*	Plexiglass dome
40		3	3	4	Heating element 700W
41		3	3	4	Ceramic fiber felt
42		3	3	4	Heating element cover
43		18	18	24	Washer M6
44		18	18	24	Nut M6
45		3	3	4	Galvanized bottom heating element lid
46		18	18	24	Screws 6x10

*Always mention the model of reference

4.5 Optionals

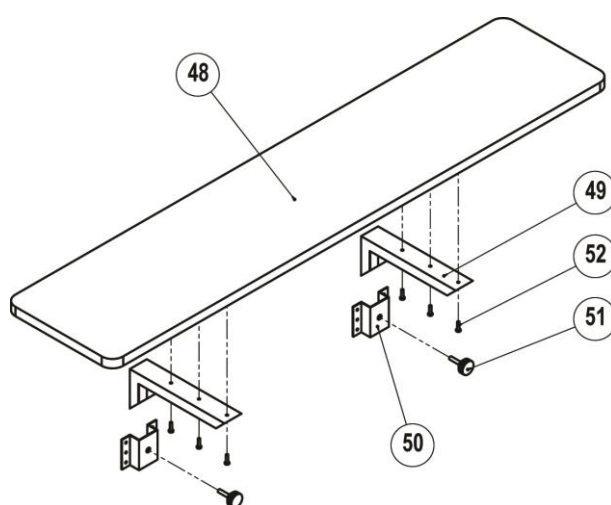


Ref.	Code	Quantity			Description
		<i>Happy 3/1</i>	<i>Happy 4/1</i>	<i>Happy 5/1</i>	
Opt. 1		1*	1*	1*	Upper shelf chromed frame
Opt. 2		2*	2*	2*	Lower part chromed frame
Opt. 3		1-2	1-2	1-2	Short side dish holder
Opt. 4**		1*	1-2*	1-2*	Lower closure
Opt. 7		1-2*	1-2*	1-2*	Long side tube dish holder
Opt. 9		1-2	1-2	1-2	Long dish holder on short side

*Always mention the model of reference

**Not illustrated

4.5.1 Optional 9



Optional 9 Mod. Happy			
Ref.	Code	Quantity	Description
48		1	Laminated shelf
49		2	Bracket
50		2	Bracket holder
51		2	Screw knob
52		6	Screws 3,5x16

**ANY MANIPULATION AUTOMATICALLY EXCLUDES THE MANUFACTURER'S
LIABILITY AND THE WARRANTY ON THIS PRODUCT**

5. Cleaning and Maintenance



WARNING:

Before any cleaning operation unplug the device from the electrical system. Never wash the appliance with water jets in order to prevent water seepage in the electrical components.

Clean the appliance at the end of the service. The tank has to be emptied from the water inside through the drain cock (see image on the right). Place a bucket under the drain cock and turn the lever, make sure it is closed once the tank will be emptied

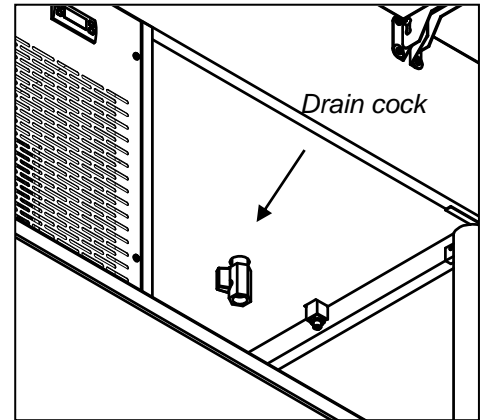
It is recommended to dry it up with a cloth or a sponge.

The laminate parts can be cleaned with a damp cloth- In case of stubborn stains, use a damp cloth with some alcohol, do never use corrosive or abrasive detergents.

The manufacturer is not responsible of any structural damage caused by the use of damaging substances.



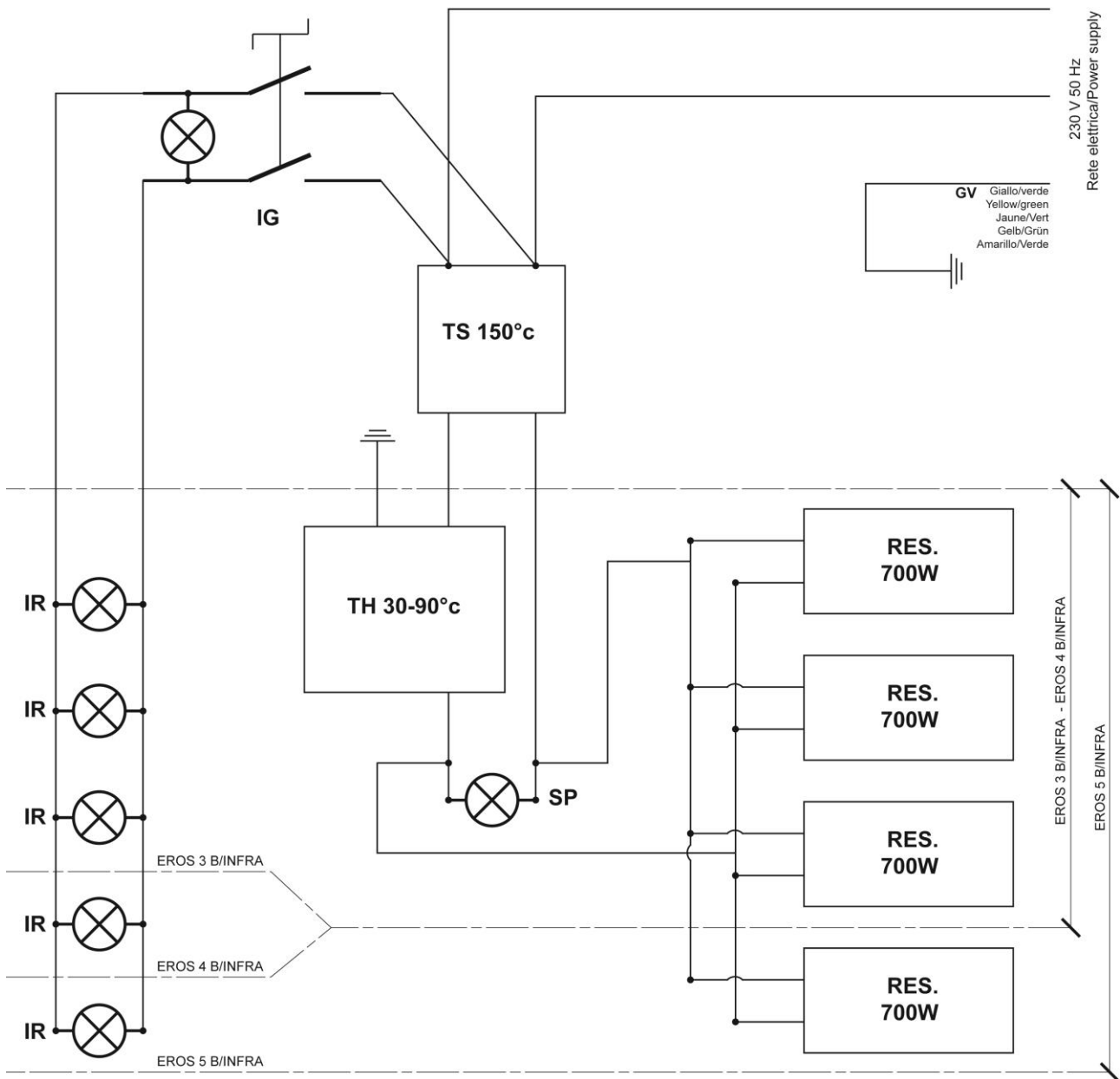
The trolley must always stand horizontally and shall never be turned.



5.1 Breakdowns

<i>Problem</i>	<i>Possible Reasons</i>	<i>Solutions</i>
The appliance doesn't warm up	Power failure	Check the power presence in the electrical system
	One or more heating elements are burned	Contact the retailer
	The power cable is worned out	Replace the cable with a suitable one
	The thermostat is broken	Contact the retailer
The lamps don't light up	The control switch doesn't work	Contact the retailer
	One or more lamps are burned	Replace the lamps with new 250W infrared lamps

5.2 Wiring Diagram



Code	Description
TH 30°-90°	Termostato 30-90°C
TS 150°C	Termostato di sicurezza 150°C
SP	Lampada di controllo
RES 700 W	Elemento riscaldante 700 W
IG	Interruttore lampade
IR	Lampade infrarosse

6. Disposal

The device must be disposed according to the local regulations and, where possible, it is necessary to un-mount it and differentiate the various components..

The packing elements (plastic, foam, bubble wrap, styro-foam, cardboard, etc..) must be kept away from children as potential danger and have to be collected and disposed separately according to the local regulations.



This marking shown on the product or its literature, indicates that it should not be disposed with other household wastes at the end of its working life.

To prevent possible harm to the environment or human health from uncontrolled waste disposal, please separate this from other types of wastes and recycle it responsibly to promote the sustainable reuse of material resources. Household users should contact either the retailer where they purchased this product, or their local government office, for details of where and how they can take this item for environmentally safe recycling. Business users should contact their supplier and check the terms and conditions of the purchase contract. This product should not be mixed with other commercial wastes for disposal.